



Lucile Packard
Children's Hospital
Stanford

June 2021

Position Specification

**Senior Vice President, Ambulatory Services
& Chief Executive Officer Packard Children's Health Alliance
& Chief Administrative Officer Packard Medical Group**



This Position Specification is intended to provide additional information about Stanford Children's Health | Lucile Packard Children's Hospital Stanford (LPCH) and the position of **Senior Vice President, Ambulatory Services**. It is designed to assist qualified individuals in assessing their interest in the position. LPCH retained Summit Talent Group (STG) to conduct this national search. STG is a boutique executive search and interim leadership placement firm with a national practice in healthcare.

Retained Search Services by:



www.summittalentgroup.com

*Seth Lee, President
Audrey Hellinger, Senior Associate*

LPCH and STG embrace diversity, equity, and inclusion in our talent acquisition practices.

Stanford Children's Health | Lucile Packard Children's Hospital Stanford

Retained Executive Search: Senior Vice President, Ambulatory Services & Chief Executive Officer Packard Children's Health Alliance & Chief Administrative Officer Packard Medical Group

[Stanford Children's Health | Lucile Packard Children's Hospital Stanford](#) is the only health care system in the San Francisco Bay Area—and one of the few in the country—exclusively dedicated to pediatric and obstetric care. The physicians and health care teams offer comprehensive clinical services, from treatments for rare and complex conditions to well-child care at the 361-bed Magnet-designated hospital (Level 1 Trauma Center, 150+ medical specialties), with more than 65 specialty locations and partnerships with community hospitals.

Honored to be one of just 10 children's hospitals nationwide, and the only one in Northern California to be named on the 2020 - 21 U.S. News & World Report Best Children's Hospitals Honor Roll, this distinction affirms the faculty, physicians, and staff's enduring pursuit of excellence and the exceptional quality provided to patients and families. In addition, the academic affiliation with Stanford Medicine and Stanford University offers access to some of the best innovative minds in medicine, science, and research working to develop groundbreaking advances and new discoveries.

Position Summary

Senior Vice President, Ambulatory Services (SVP), & Chief Executive Officer Packard Children's Health Alliance & Chief Administrative Officer Packard Medical Group.

The SVP collaborates in a governance model that includes leadership oversight and management facilitation as the Chief Executive Officer of the Packard Children's Health Alliance (PCHA) and the Chief Administrative Officer of the Packard Medical Group (PMG).

- Stanford Children's Health is the umbrella term for both entities.
- PCHA is a subsidiary of Lucile Packard Children's Hospital and is a separate employer; predominantly primary care network practices and several large OB/GYN practices.
- PMG is the Faculty Practice Organization for the School of Medicine. Many physicians practice at both LPCH-owned and PCHA-owned clinics.

The incumbent is responsible for the development, implementation and management of a network of hospital and extensive physician relationships providing general and specialty pediatric and obstetric services, including 65 outpatient locations affiliated with Stanford Children's Health across Northern California. In addition, the SVP has Service Line responsibilities for: Orthopedics/Rehab and Brain Behavior (Neurology, Neurosurgery & Psychiatry).

Reporting Relationships

Note: Organizational charts on pages 4 & 5.

- Reporting to the Enterprise-level Chief Operating Officer
- Dyad partner to the Chief Medical Officer
- Close working relationship with the Chief Strategy Officer
- Member of the CEO & COO's Executive Leadership Teams (collaborate with senior leaders across the system to deliver on important organizational initiatives)

Strategic Imperative

- Create a high-quality physician practice that spans the continuum of obstetrics and pediatric care differentiated by local availability of care and service.
- Develop a physician infrastructure that is complementary between faculty practice and Packard Medical Group to support the key initiatives of the hospital (i.e., COEs, JVs, etc.) as well as support the research and teaching mission of the School of Medicine.
- Deliver on Vision 2025, in particular ability to expand outreach; grow the patient base affiliated with Stanford Children’s Health Enterprise.

At a Glance: Rolling 12 Months through April 2021

	Packard Medical Group	Packard Children’s Health Alliance
Annual visit volume	317,000	237,000
MDs	538	112
NPs/PAs	214	12
Number of staff	706.6	359
Types of specialties	31	8

Note: Large multi-specialty sites: Palo Alto, Sunnyvale, Walnut Creek, San Francisco; Palo Alto Campus Offices account for ~30% of visit volume.

Priorities and Goals

- Growth of clinical practice.
- Collaborate with human resources on workforce planning.
- Improve patient, employee and physician satisfaction.
- Facilitate work teams in the areas of standardization, gap analysis, and corrective action across clinics.
- Communicate process improvement and outcomes management successes.
- Drive clinical and financial dashboard (KPIs).
- Manage budgets, capital expenditures and resource allocation.
- Advocate for use of new technologies; digital and telehealth.
- Implement Hub & Spoke model.
- Enhance the referral network.
- Incentivize and educate physicians to be aligned with financial outcomes, funds flow.
- Ensure compliance with regulatory, accrediting and statutory bodies.

Role Characteristics

Observable and measurable attributes and skills required to successfully perform the essential functions of the role and are generally demonstrated through qualifying experience, education, or licensure/certification.

- “Physician Whisperer”: Physician interaction expertise, 24/7 availability and responsive communications.
- Visual personality, high EQ/self-awareness; accessible and strong presence; diplomacy.
- “Appropriately in the weeds” (support of direct reports managing patient access and clinic operations infrastructure).
- Partnership with Chief Strategy Officer:
 - Shared vision of innovation.
 - Joint ownership for growth (the business case).
 - Data analysis, framework for practice acquisition / JV, referral patterns, market share analysis, financial analytics, & productivity.

- Thrive in the matrix (academic/community practice/university structure); function well, often times, in ambiguity (decision making, not always grounded in structure).
- Financial Stewardship: challenge overhead assumptions, push for productivity, budget acumen.
- Business Savvy: joint ventures, acquisitions, Board interactions, capital investments.
- Mission-Driven: families & children, servant leader mindset.
- Role model in the practice and coaching of Lean Daily Management (Leader Standard Work (LSW), A3 problem solving).

The Ideal Candidate

- Education: Master's degree (MBA, MHA, MPH) in a related field from an accredited University.
- Combination of ten (10) years' experience in ambulatory physician relations, program development, strategy, and business development in an integrated and/or academic health system with a leadership track record.
- Highly refined physician engagement skills, a true penchant for partnership with physicians.
- Familiar working in a model with both shared and purchased services to support operations.
- Balanced perspective on the ability to integrate mission fulfillment, strategic direction and financial/growth objectives.
- Prior professional experience gained in career exposure to academic and community physician practices, service lines, hospital operations.

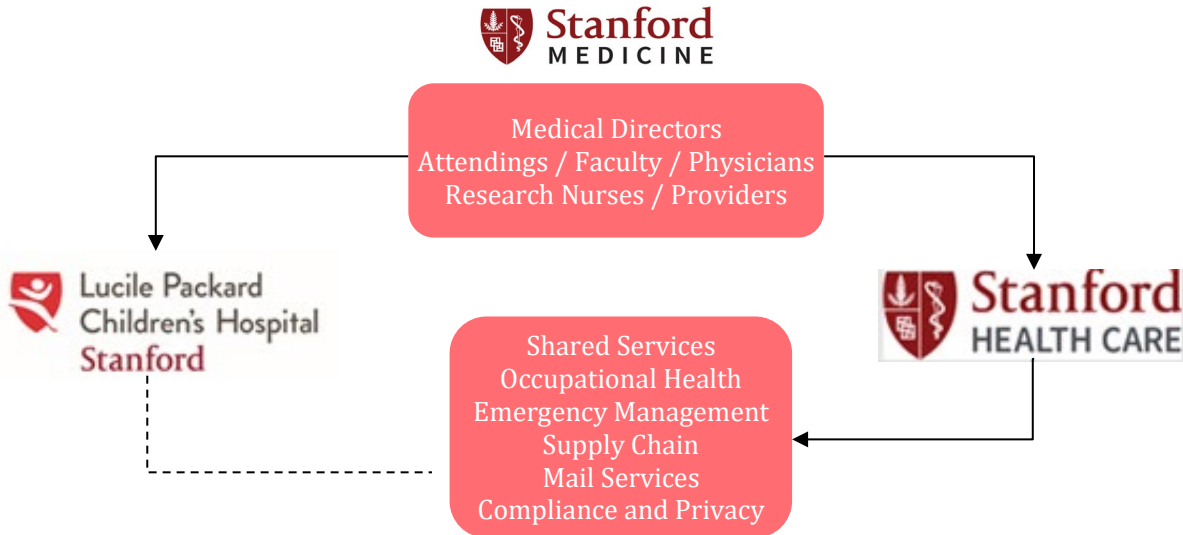
Essential Functions

The essential functions listed are typical examples of work performed by positions in this job classification. They are not designed to contain or be interpreted as a comprehensive inventory of all duties, tasks, and responsibilities. Executives may also perform other duties as assigned.

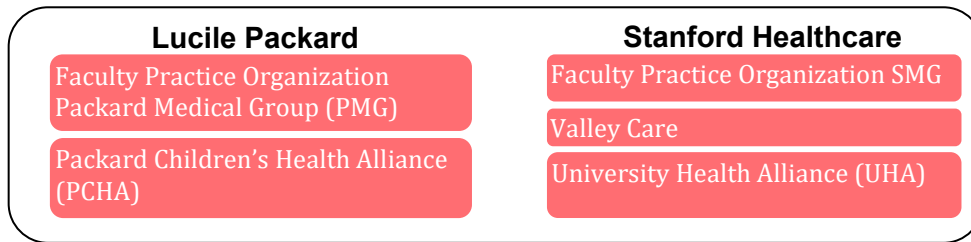
- The SVP is responsible for the operation of the practices.
- Serve as a member of the enterprise-wide senior leadership team shaping and implementing strategy.
- Works with the CSO and staff to develop the appropriate agreements, contracts, and business plans to secure long term relationships with identified hospital partners.
- During the development of these agreements and business plans the CSO will be the lead executive. Once the agreements are in place the Senior Vice President will assume primary responsibility for executing the agreements and plans and for managing the relationships on behalf of SCH.
- These are complex agreements and relationships which require the ongoing involvement of the CSO and other members of the executive staff.
- Therefore, the Senior Vice President is responsible for engaging appropriate members of the executive staff based on the needs of the partners.
- Works with the CSO, CAO of the SCH FPO, and the SHC Executive Director, Physicians Network Development the VP will assist in the development of the proposed new community physician network and Foundation.
- Once the network and Foundation is established, and working with the SHC Executive Director, Physicians Network Development, the Senior Vice President will have overall responsibility for the management and growth of the network and Foundation.

Organizational Charts

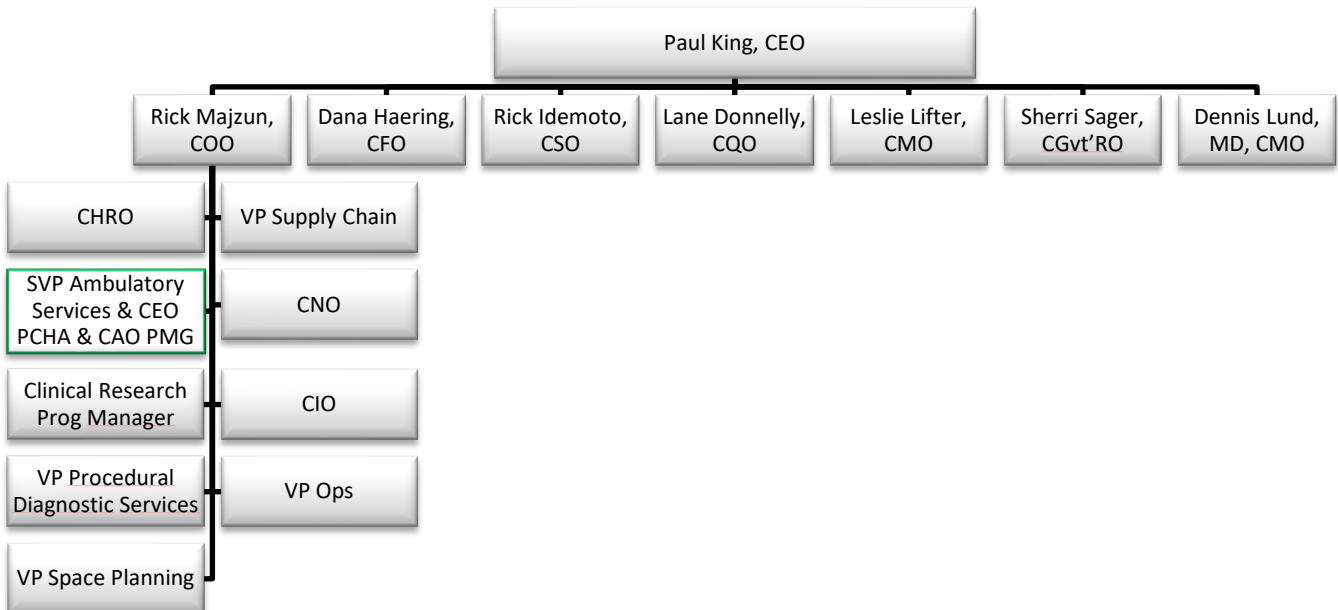
Governance Structure



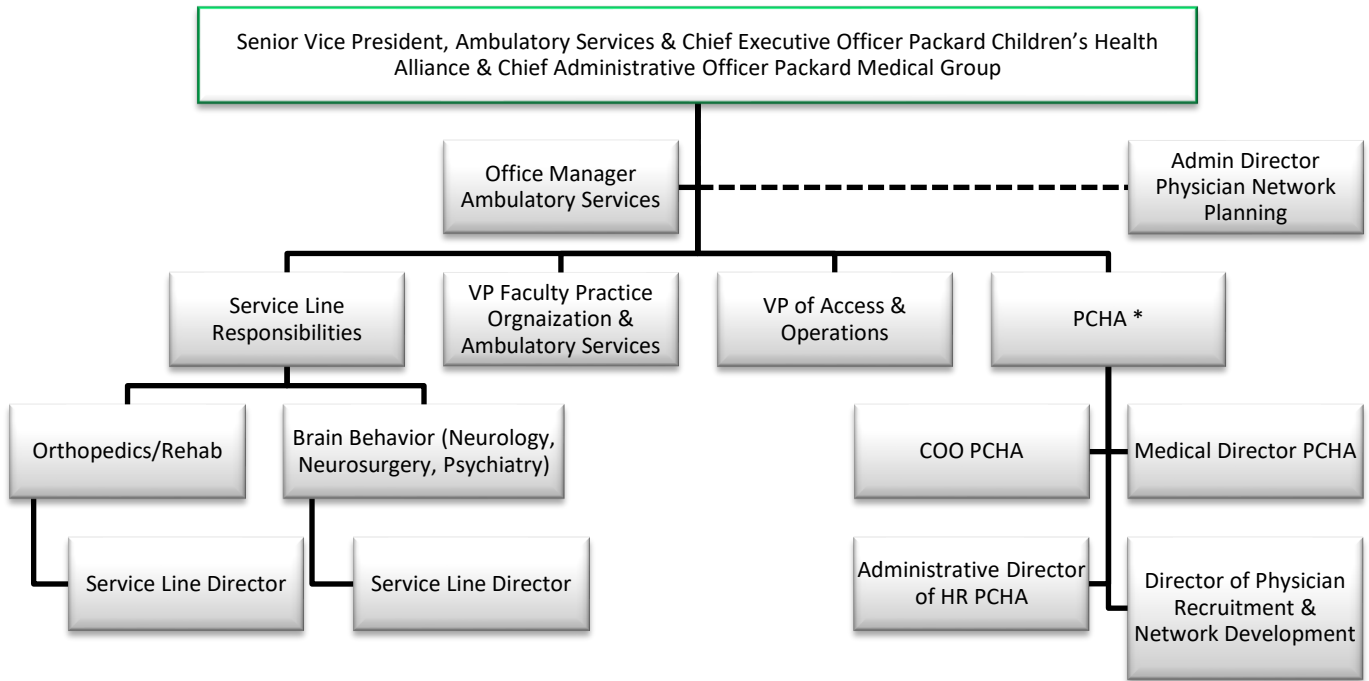
Partners and Affiliates



Executive Leadership - Stanford Children's Health | Lucile Packard Children's Hospital Stanford



Ambulatory Services Organizational Chart
Dyad Partner CMO Denny Lund, MD



* The following are purchased services by PCHA from Stanford Children's Health:

- Information Systems
- Revenue Cycle
- Call Center
- Finance
- Quality and Safety

Stanford Children's Health | Lucile Packard Children's Hospital Stanford

Stanford Children's Health is one of the few health systems in the country exclusively dedicated to pediatric and obstetric care. Our physicians and health care teams offer comprehensive clinical services, from treatments for rare and complex conditions to well-child care at more than 65 locations.

We provide care in more than 150 medical specialties, many of which are part of our centers of excellence including: brain & behavior, cancer, heart, pregnancy & newborn, pulmonary and transplant. We also provide an additional, wide range of services for babies, kids and pregnant moms.

We're honored to be one of just 10 children's hospitals nationwide, and the only one in Northern California, to be named on the 2020 - 21 U.S. News & World Report Best Children's Hospitals Honor Roll. This distinction affirms our faculty, physicians, and staff's enduring pursuit of excellence and the exceptional quality they provide to patients and families. And, thanks to our academic affiliation with Stanford Medicine and Stanford University, we have access to some of the best innovative minds in medicine, science, and research working to develop groundbreaking advances and new discoveries. With Lucile Packard Children's Hospital Stanford at the center of a network with locations across the Bay Area, our patients can access world-class care close to home.



Vision, Mission & Values



Lucile Packard Children's Hospital Stanford was the vision of Lucile Salter Packard, our generous founding donor and visionary for children's health. Her dream was simple: to nurture both the body and soul of every child. She believed in the power of nature as an important part of the healing process. She wanted kids to be treated like kids — not just patients. And she believed that caring for a child meant involving the whole family. Today, Stanford Children's Health honors that vision through our dedication in delivering innovative services and unparalleled family-centered-care.

Our Vision: To heal humanity through science and compassion, one child and family at a time.

Our Mission: Extraordinary Care. Continual Learning. Breakthrough Discoveries.

Values: Stanford Children's Health **CARES** (Collaborate, Advance, Respect, Educate, Serve) by aligning people and resources to provide extraordinary patient and family-centered care.

PCARES (Personalize, Communicate, Assess, Respond, Expectation, Support): Stanford Children's Health's enterprise-wide improvement program that is helping dramatically improve patient as well as colleague to colleague experiences and overall efficiency through better communication; openness is a hallmark of our diverse environment that leads directly to better patient outcomes and experiences, improved colleague interactions and enhances our already outstanding professional culture.

History

Our mission of delivering the very best care started nearly 100 years ago. Lucile Packard Children’s Hospital Stanford traces its roots to the Stanford Home for Convalescent Children, which was established in 1919 to care for children with long-term illnesses such as polio, tuberculosis and rheumatic fever.

In 1959, the Stanford University Medical Center opened a new facility in Palo Alto, and moved the Stanford Home for Convalescent Children to the current campus. This helped strengthen the teaching and research ties between the hospital and the university and enabled us to provide care for more seriously ill children.

As the need for pediatric care increased, so did the need for a larger facility. In 1986, David and Lucile Packard donated \$40 million to begin construction on a new children’s hospital—and in 1991 Lucile Packard Children’s Hospital at Stanford officially opened its doors to the community. Named in memory of our visionary, Lucile Salter Packard, who died in 1987, the hospital has continued to grow. Thanks to a team of dedicated people led by Anne Bass, Elizabeth Dunlevie and Susan Packard Orr, we started a campaign in 2007 to rally support for a hospital that would serve not only future generations of kids and moms here in the Bay Area but also families around the world. By its conclusion in December 2012, the campaign had raised nearly \$550 million and we held a groundbreaking event to officially kick-off the project.

Generous donations and support from across the community helped to fund our transformational expansion to the building set to open in December 2017. We celebrate our legacy and thank the many people whose generous support has helped Lucile Packard’s dream evolve through the years. Today, Stanford Children’s Health stands as one of the largest health care networks exclusively dedicated to pediatric and obstetric care.

When the doors to our new hospital open, we’ll welcome even more patients and their families into one of the nation’s most technologically advanced, family-friendly and sustainable children’s hospitals.

Fast Facts

<https://www.stanfordchildrens.org/content-public/pdf/infographic-10-things-stanford-childrens.pdf>

- 525,000+ pediatric outpatient visits annually; delivering 4,400+ babies
- 725+ Stanford Medicine doctors; 65+ Bay Area locations
- Ranked in all 10 pediatric specialties by U.S. News & World Report; nationally ranked pediatric cardiology and heart surgery program; national leader in pediatric solid organ transplants.
- We provide care in more than 150 medical specialties, many of which are part of our seven centers of excellence:
 - Bass Center for Childhood Cancer and Blood Diseases
 - Brain and Behavior Center
 - Children’s Orthopedic and Sports Medicine Center
 - Betty Irene Moore Children’s Heart Center
 - Johnson Center for Pregnancy and Newborn Services
 - Pulmonary, Asthma and Sleep Medicine Center
 - Pediatric Transplant Center

[Stanford Children's Health](#) and Lucile Packard Children's Hospital Stanford are dedicated to improving pediatric and obstetric health around the corner and around the world. The following sample of recent awards represents the depth and breadth of this commitment, from hospital quality to patient safety to environmental impact.

2021

Vice President of Strategic Partnerships and Business Development, Charlette Stallworth, honored with 2021 YWCA Silicon Valley Tribute to Women Award (March 2021)

Charlette Stallworth, Stanford Children's Health vice president of strategic partnerships and business development, has been selected as an Honoree for the 2021 YWCA Golden Gate Silicon Valley Tribute to Women Award. This recognition celebrates the achievements of women who have made significant contributions to Silicon Valley in executive and professional roles, and is based on their outstanding achievements, leadership, and impact to their organization, field, and community. This year the YWCA selected 39 Honorees, all of whom will be honored in a virtual ceremony on May 13, 2021. Stallworth was nominated for the award by Rick Idemoto, chief strategy officer for Stanford Children's Health.

Stanford Children's Health named a CIO 100 Award winner for 2021 (March 2021)

IDG Communications, Inc.'s annual US CIO 100 Awards recognizes Stanford Children's Health Mobile App Digital Transformation Journey as an innovative and inspiring example of how IT leadership, business partnerships and customer engagement set the organization up for success. The award is an acknowledged mark of enterprise excellence and celebrates Stanford Children's Health and the teams that are using IT in innovative ways.

Stanford Children's Health has leveraged the unique one mobile app approach to provide a comprehensive, digitally driven tool for patients and families to easily access our services and stay connected. The mobile app technology platform is also a key differentiator with many innovations including digital health developed in house. Ed Kopetsky, Stanford Children's Health's Chief Information Officer, stated "We are honored to receive the CIO 100 Award. This recognition highlights the collaboration between Information Services and our clinical and business partners to lead technology innovation and digital strategies in support of our organization's goals and objectives to provide family-centered, world class care to children and expectant mothers."

Stanford Children's Health CIO Earns CHIME's Healthcare Hero Designation (January 2021)

Ed Kopetsky, senior vice president and chief information officer of Stanford Children's Health, has been named a Healthcare Hero by the College of Healthcare Information Management Executives (CHIME) for outstanding service during the COVID-19 pandemic. CHIME winners are recognized for their leadership, extraordinary innovation and dedication to the COVID-19 response; for offering digital health care solutions that are transforming health and care across the health care ecosystem; and for prioritizing their community's health.

"I am honored to be named a CHIME Healthcare Hero," said Kopetsky. "During the COVID-19 pandemic, we have leveraged digital technologies, including telehealth and remote monitoring, to improve patient care and outcomes, and focused on advanced analytics and predictive capabilities to increase quality and efficiency throughout the organization. This achievement is a testament to the innovation and advancements happening each day at Stanford Children's Health, and a recognition of all the healthcare heroes across our health system."

2020

County Supervisor Honors Two Faculty Members for Work during COVID-19 Pandemic (December 2020)

Santa Clara County Supervisor Joe Simitian has recognized two Stanford Medicine physicians for their contributions this year to the local community. Yvonne Maldonado, MD, chief of pediatric infectious diseases at Stanford Children's Health and Steven Adelsheim, MD, professor of psychiatry and behavioral sciences, were awarded supervisor's medals by Simitian for advancing the wellbeing of county residents during the COVID-19

pandemic. They showed admirable resilience and offered others inspiration during a difficult year, Simitian said during an online awards ceremony Dec. 14.

PARENTS magazine Most Innovative Children's Hospitals (December 2020)

Lucile Packard Children's Hospital Stanford has been named a Most Innovative Children's Hospital by PARENTS Magazine. The PARENTS survey recognizes children's hospitals in the United States that have developed medical innovations that have had a meaningful impact on patient care, spanning digital health advances, patient safety, new medical treatments and devices, unique community health programs, and clever ways to keep young patients and their families comfortable in the hospital. To determine this year's winners, PARENTS editors surveyed 50 leading children's hospitals, inquiring about innovations, response to the pandemic and technology used on a regular basis. More than 200 innovations were submitted overall; among the 15 innovations selected is the Stanford Children's Health donor heart matching program. In addition, the Stanford Children's Health Teen Van was recognized by PARENTS for its role during COVID-19. The Most Innovative Children's Hospitals appears in the January issue of PARENTS magazine and online at [Parents.com/Innovative Hospitals](https://Parents.com/InnovativeHospitals).

Stanford Children's Health Earns 2020 CHIME Digital Health Most Wired Recognition (October 2020)

Stanford Children's Health has earned the 2020 CHIME Digital Health Most Wired recognition from the College of Healthcare Information Management Executives (CHIME). The CHIME Digital Health Most Wired program conducts an annual survey to assess how effectively health care organizations apply core and advanced technologies into their clinical and business programs to improve health and care in their communities. This is the sixth straight year that Stanford Children's Health has received the Most Wired designation.

Vice President and Associate Chief Information Officer, Lisa Grisim, RN, MSN, honored with 2020 YWCA Silicon Valley Tribute to Women Award (September 2020)

Lisa Grisim is one of 46 women selected to receive a 2020 YWCA Silicon Valley Tribute to Women Award, an honor that celebrates the achievements of women who have excelled in their field and have made significant contributions to the Silicon Valley through their exceptional leadership. Grisim, a nurse who serves as Stanford Children's Health vice president and associate chief information officer, was nominated for the award by Ed Kopetsky, chief information officer for Stanford Children's Health.

Human Rights Campaign Foundation Recognizes and Thanks Record 765 Health Care Facilities Paving The Way for Equality (September 2020)

Stanford Children's Health is proud to have earned the LGBTQ Health Care Equality Leader designation with a perfect score of 100 on the 2020 Human Rights Campaign Foundation "Healthcare Equality Index." The HEI is the national LGBTQ benchmarking tool that evaluates healthcare facilities' policies and practices related to the equity and inclusion of their LGBTQ patients, visitors and employees.

Stanford Health Care, Packard Children's receive environmental awards (July 2020)

Stanford Health Care and Lucile Packard Children's Hospital Stanford each received an Environmental Excellence Award from Practice Greenhealth, a nonprofit organization that promotes sustainability in the health care industry. Packard Children's Hospital received a Partner Recognition Award in honor of its commitment to environmental improvements and its progress toward waste reduction, renewable energy and other eco-friendly practices.

Lucile Packard Children's Hospital Stanford Named as a Top 10 Children's Hospital in the Nation by U.S. News & World Report (June 2020)

Packard Children's is named to U.S. News & World Report 2020-21 Best Children's Hospitals Honor Roll, a designation awarded to pediatric centers that deliver exceptionally high-quality care across multiple specialties. The rankings show Packard Children's as a top 10 children's hospital in the nation, the top-ranked children's hospital in Northern California and one of just two children's hospitals on the West Coast to achieve Honor Roll status. Five specialties ranked in the top 10 with two ranked in the top five in the nation.

Palo Alto, CA

From cityofpaloalto.org: Located 35 miles south of San Francisco and 14 miles north of San Jose, Palo Alto is a community of approximately 67,082 residents. Part of the San Francisco Metropolitan Bay Area and the Silicon Valley, Palo Alto is located within Santa Clara County and borders San Mateo County. The City's boundaries extend from San Francisco Bay on the east to the Skyline Ridge of the coastal mountains on the west, with Menlo Park to the north and Mountain View to the south. The City encompasses an area of approximately 26 square miles, of which one-third is open space. Palo Alto is strategically located and easily accessible to major surface routes, including Interstate 280, Highway 101, Highway 84 - the Dumbarton Bridge and Highway 92 - the Hayward-San Mateo Bridge. Air transportation is easily accessible by bus, automobile or shuttle service to San Francisco, San Jose and Oakland international airports. Within the City, commuter rail transportation is conveniently located and the Palo Alto stop is one of the most used in the Caltrain system. Alternative transportation options include numerous bike paths throughout the City and an internal shuttle service is also available.

The City of Palo Alto is more than 100 years old and is named after a majestic 1000 (not 250) year old coastal redwood tree along San Francisquito Creek, where early Spanish explorers settled. The blend of business and residential areas anchored by a vibrant downtown defines Palo Alto's unique character. A charming mixture of old and new, Palo Alto's tree-lined streets and historic buildings reflect its California heritage. At the same time, Palo Alto is recognized worldwide as a leader in cutting-edge technological development. This exciting mix of tradition and innovation makes Palo Alto an extraordinary place in which to operate a business. Unique among California cities, Palo Alto is a full-service municipality that owns and operates its gas, electric, water, sewer, refuse and storm drainage services at very competitive rates for its customers.

As befits the City known as "Birthplace of the Silicon Valley," the City has developed a 31-mile dark fiber ring for ultra-fast Internet access. Complementing its exciting and innovative business community, Palo Alto's residents are highly educated, politically aware and culturally sophisticated. An abundance of local pride and numerous neighborhood organizations contribute to Palo Alto's charming historic and upscale commercial and residential areas. Characteristic of Palo Alto is the care taken to protect open space and parkland. Palo Alto has a remarkable number of City-owned parks for its size (36 at last count) and nearly one-third of its 26 square miles is open space. Palo Alto's San Francisco Bay location and natural environment offer the opportunity to enjoy bird and aquatic life in a natural habitat. Proximity to Stanford University with its cultural and educational offerings add to the vibrance, innate charm and beauty of Palo Alto.

Distinctive in every way, Palo Alto offers its business community a diverse and exciting environment in which to work and live.

Palo Alto, Stanford and the surrounding communities offer activities for all ages and interests. For out-of-town visitors, attractions that top the list of “must sees” include a trip to the Stanford University campus, where attractions include [Hoover Tower](#), [Memorial Church](#), [Cantor Arts Center](#), [Rodin Sculpture Garden](#) and a central campus bustling with activity.

But surrounding Stanford are plenty of other places worth visiting. Although not open to the public, the original (and restored) [garage](#) where David Packard and Bill Hewlett started Hewlett-Packard can be seen from the street. The [Computer History Museum](#) in Mountain View offers a low-key view of the development of Silicon Valley.

Gardening enthusiasts should be sure to visit the [Gamble Garden](#) in Palo Alto and the [Filoli Estate & Gardens](#) located on a beautiful estate west of Redwood City about a 15-minute drive north on Interstate 280.

Kids will enjoy the [Palo Alto Junior Museum & Zoo](#), the small [Museum of American Heritage](#) in downtown Palo Alto offers a look at America's inventions, [the Hiller Aviation Museum](#) in San Carlos celebrates aviation discovery and innovation, and [Great America](#), an amusement park located about 20 minutes south of Palo Alto on U.S. Highway 101 in Santa Clara, promises to excite. Or for a fun family activity between October and April, go ice skating at [the Winter Lodge](#), an outdoor rink in the Midtown Palo Alto shopping district.

Art lovers shouldn't miss the many galleries around town or the [Palo Alto Art Center](#), a popular venue for Bay Area and local artists.

Other popular attractions include the [Allied Arts Guild](#), an oasis of shops, gardens and artists' studios in nearby Menlo Park, the [Stanford Linear Accelerator](#), a particle physics research facility operated for the government by Stanford, and the [Stanford Research Park](#), home to many high technology companies.

When you're worn out from sightseeing or shopping, get outside and get some exercise by taking advantage of one of the area's many recreational opportunities.

Other Website Resources:

- https://www.cityofpaloalto.org/visiting/about_palo_alto.asp
- <https://www.britannica.com/place/Palo-Alto>
- <https://livability.com/ca/palo-alto/real-estate/why-palo-alto-calif-is-a-top-100-best-place-to-live>
- <https://livability.com/ca/palo-alto/things-to-do/things-to-do-in-palo-alto-ca>
- https://www.tripadvisor.com/Tourism-g32849-Palo_Alto_California-Vacations.html
- <https://www.niche.com/places-to-live/palo-alto-santa-clara-ca/>
- https://en.wikipedia.org/wiki/Palo_Alto,_California

Equal Opportunity Employer

Lucile Packard Children's Hospital Stanford strongly values diversity and is committed to equal opportunity and non-discrimination in all of its policies and practices, including the area of employment. Accordingly, LPCH does not discriminate against any person on the basis of race, color, sex, sexual orientation or gender identity, religion, age, national or ethnic origin, political beliefs, marital status, medical condition, genetic information, veteran status, or disability, or the perception of any of the above. People of all genders, members of all racial and ethnic groups, people with disabilities, and veterans are encouraged to apply. Qualified applicants with criminal convictions will be considered after an individualized assessment of the conviction and the job requirements, and where applicable, in compliance with the San Francisco Fair Chance Ordinance.

Candidate Inquiries & Consideration

[Summit Talent Group](#), a boutique executive search and interim leadership placement firm with a national healthcare practice, has been retained by [Stanford Children's Health | Lucile Packard Children's Hospital Stanford \(LPCH\)](#) to conduct a national search for the leadership position: Senior Vice President, Ambulatory Services.

Summit Talent Group has previously and successfully partnered with LPCH to identify and place executive talent; we can positively affirm that LPCH offers a culture of teamwork, growth, clinical excellence, and innovation.

Audrey Hellinger, Senior Associate - Summit Talent Group, is the point of contact for candidate consideration. She can be reached via mobile: 773.759.4347 or ahellinger@summittalentgroup.com

<http://careers-internal.stanfordchildrens.org/jobs/6742413-senior-vice-president-ambulatory-services-1-dot-0fte-days>

Summit Talent Group Contact Information

Summit Talent Group is a boutique executive search and interim leadership placement firm with a national practice in healthcare.

Summit Talent Group Staff

Seth Lee, MEd – President	slee@summittalentgroup.com	443.845.3902
Joann Sherrer-Fornoff, MBA SPHR – Vice President	isherrer@summittalentgroup.com	443.452.8855
Audrey Hellinger, BA – Senior Associate	ahellinger@summittalentgroup.com	773.759.4347
Carolyn Banas, BA – Operations Manager	cbanas@summittalentgroup.com	443.325.7300
Lexie Gorman, BS – Senior Researcher	lgorman@summittalentgroup.com	443.629.5791
Joanne Quinn, MA – Senior Researcher	jquinn@summittalentgroup.com	201.406.5319
Kyle Wortman – Technology Manager		
Jackie Webb, MAEd – Data Entry Specialist		
Josh Webb – Data Entry Specialist		
Vic Sonnino, MD MBA – Chief Medical Executive Consultant		
Karen Buck, MSN NE-BC – Chief Nurse Executive Consultant		

Office Address

5850 Waterloo Road, Suite 140, Columbia, MD 21045

www.summittalentgroup.com | 443.325.7300